

AFFORDABLE RESORT STYLE LIVING FOR ACTIVE ADULTS 55 & OVER.



IN-HOME FLYER



THE DOGWOOD (LOT# 281)

1200 SQ. FT. (APPROX.)

2 BEDROOM, 2 BATH W/STUDY

THIS MODEL HOME CAN BE PURCHASED FOR

\$228,900 AS SEEN ON-SITE

PICK YOUR LOT AND CUSTOMIZE YOUR HOME

Homeowner will meet with on-site sales team to choose interior colors, carpet, flooring and countertop selections. On-site Superintendent available for lot layout, exterior options and any construction questions.

(Price to be determined at time of order)

*Quail Run Is A Gated Community With Park-Like Setting
Community Center w/Full Kitchen, Pool & Spa with Barbecue
and Recreation Area*

Monthly fees include sewer, garbage with on-site management

PRICE INCLUDES THESE FEATURES:

- Many Upgraded Standard Features (including kitchen appliances)
- Finished Three Car Garage (30x30)
- Front and Rear Yard Landscaping w/Sprinklers
- All Concrete Work And Hardscape
- Back Yard Concrete Patio
- Wood Patio Cover
- Heat Pump (for energy saving)
- Front Yard Post Light
- Vinyl Privacy Fence
- Retaining Walls
- Washington State Sales Tax

200 Bridle Way #200 | Yakima, WA 98901

1 (509) 469-2926 • 1 (877) 469-2992

quailrun55plus.com

Homes Sold By **LAKESHORE**
HOME SALES LLC



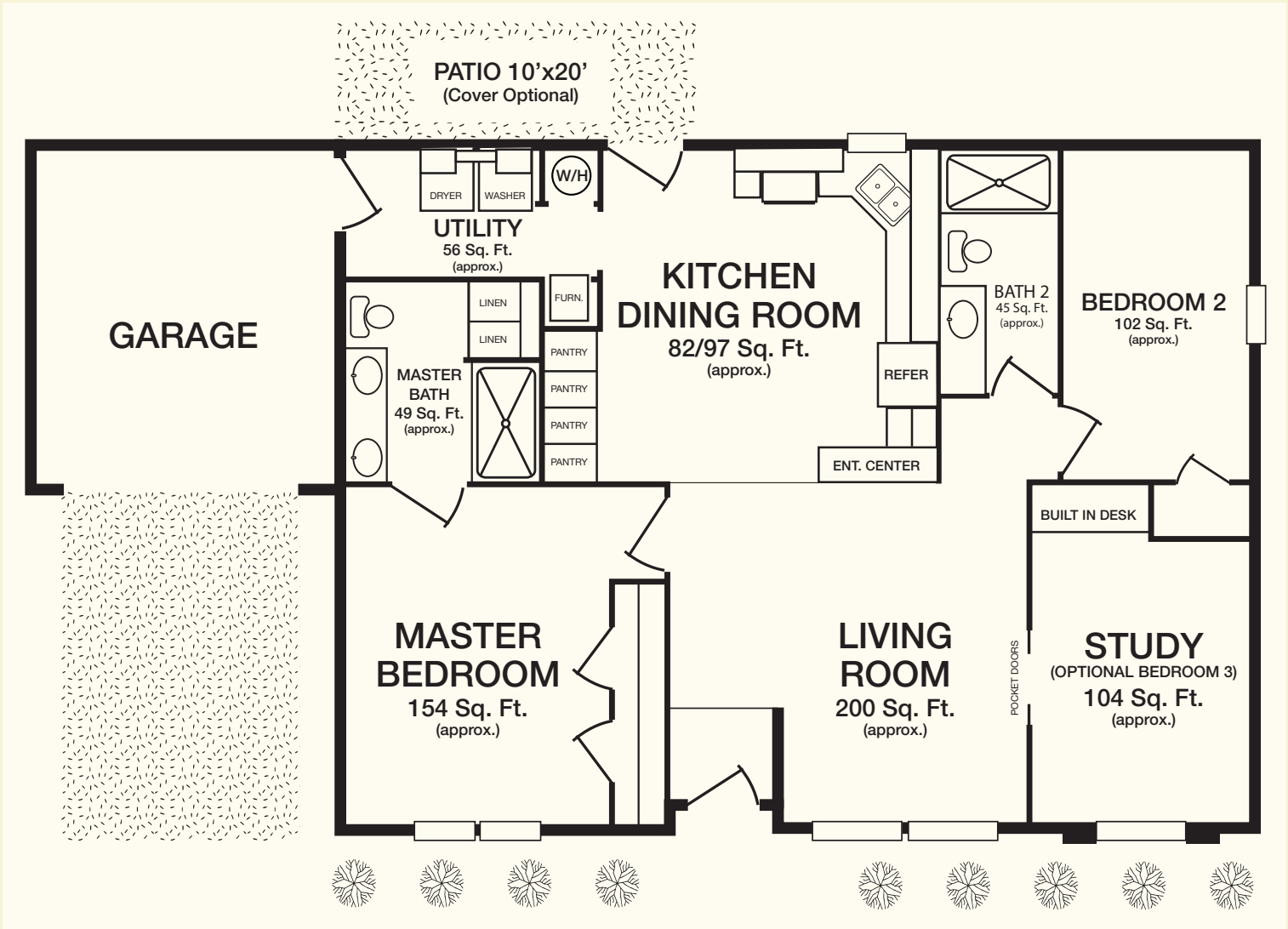
AFFORDABLE RESORT STYLE LIVING FOR ACTIVE ADULTS 55 & OVER.



THE DOGWOOD

1200 SQ. FT. (APPROX.)
2 BEDROOM, 2 BATH
w/STUDY

Floor plan shown for display purpose only. Subject to change without notice.
Landscaping and lot configuration may differ.



200 Bridle Way #200 | Yakima, WA 98901
1 (509) 469-2926 • 1 (877) 469-2992
quailrun55plus.com

LAKE SHORE
HOME SALES, LLC

