

AFFORDABLE RESORT STYLE LIVING FOR ACTIVE ADULTS 55 & OVER.



PACIFIC POWER.
\$2,750
REBATE AT CLOSING

IN-HOME FLYER



THIS MODEL HOME IS MOVE-IN READY

THE LILAC (LOT#156)
1300 SQ. FT. (APPROX.)
2 BEDROOM, 2 BATH
COVERED FRONT ENTRY

QUALITY BUILT MODEL HOME STARTING AT
\$317,900

**Price subject to change without notice
(Call for Homeowner monthly fee)*

*This home is move-in ready.
Call Pat Loomis for details...
509.469.2926*

*Quail Run Is A Gated Community With Park-Like Setting
Community Clubhouse w/Full Kitchen, Pool & Spa, Barbecue, Pet
Park, Street Snow Removal and Maintenance of Common Areas.
Monthly fees include sewer, garbage with on-site management*

PRICE INCLUDES THESE FEATURES:

- Covered Front Entry
- Cultured Stone on Front of Home and Garage
- Upgraded Appliance Package including Double Door Refrigerator w/Ice
- Top of The Line Flooring (call for details)
- Finished Large Two-Car Garage (26x24 approx.)
- Front and Rear Yard Landscaping w/Sprinklers and Drip System on Plants
- Side Yard Concrete Patio w/Wood Cover and Lights
- Additional Paver Patio Off Side Yard Concrete Patio
- Vinyl Back Yard Privacy Fencing
- Heat Pump (for energy saving)
- Side Yard Retaining Wall
- All Concrete Work And Hardscape
- Front Yard Post Light
- Washington State Sales Tax

200 Bridle Way #200 • Yakima, WA 98901
1 (509) 469-2926 • 1 (877) 469-2992
quailrun55plus.com

Homes Sold By **LAKESHORE**
HOME SALES LLC



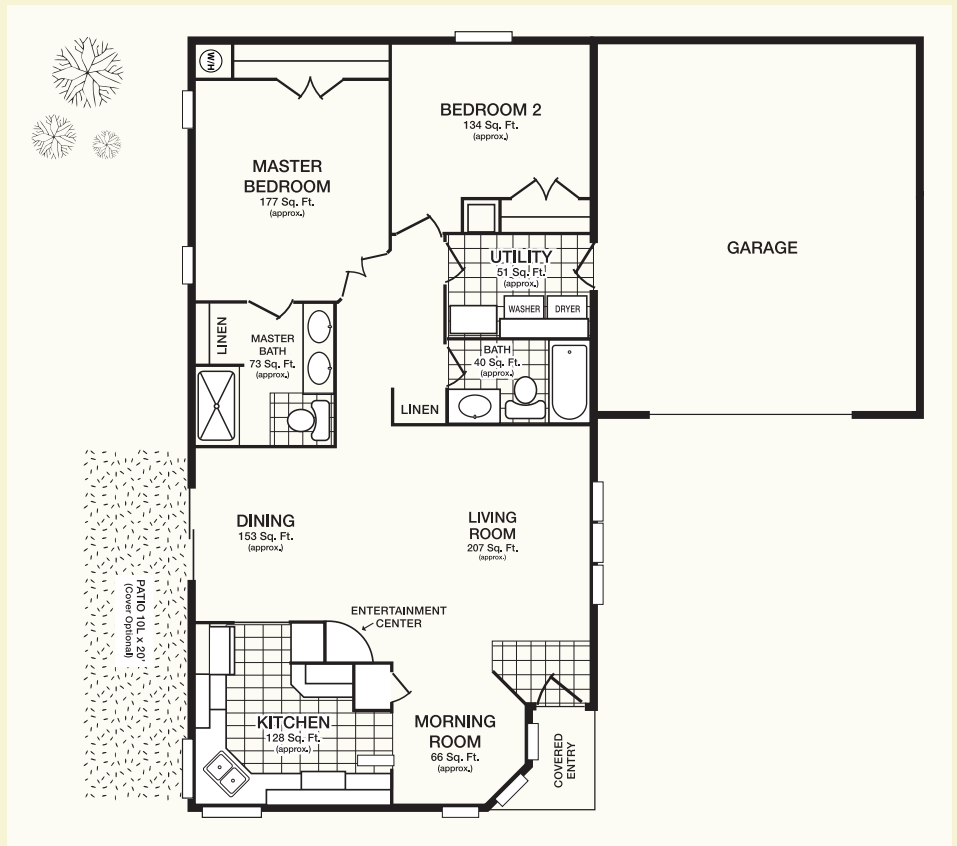
AFFORDABLE RESORT STYLE LIVING FOR ACTIVE ADULTS 55 & OVER.



THE LILAC

1300 SQ. FT. (APPROX.)
2 BEDROOM, 2 BATH
W/COVERED FRONT ENTRY

Floor plan shown for display purpose only.
Subject to change without notice.
Landscaping and lot configuration may differ.



200 Bridle Way #200 • Yakima, WA 98901
1 (509) 469-2926 • 1 (877) 469-2992
quailrun55plus.com

LAKESHORE
HOME SALES, LLC

